

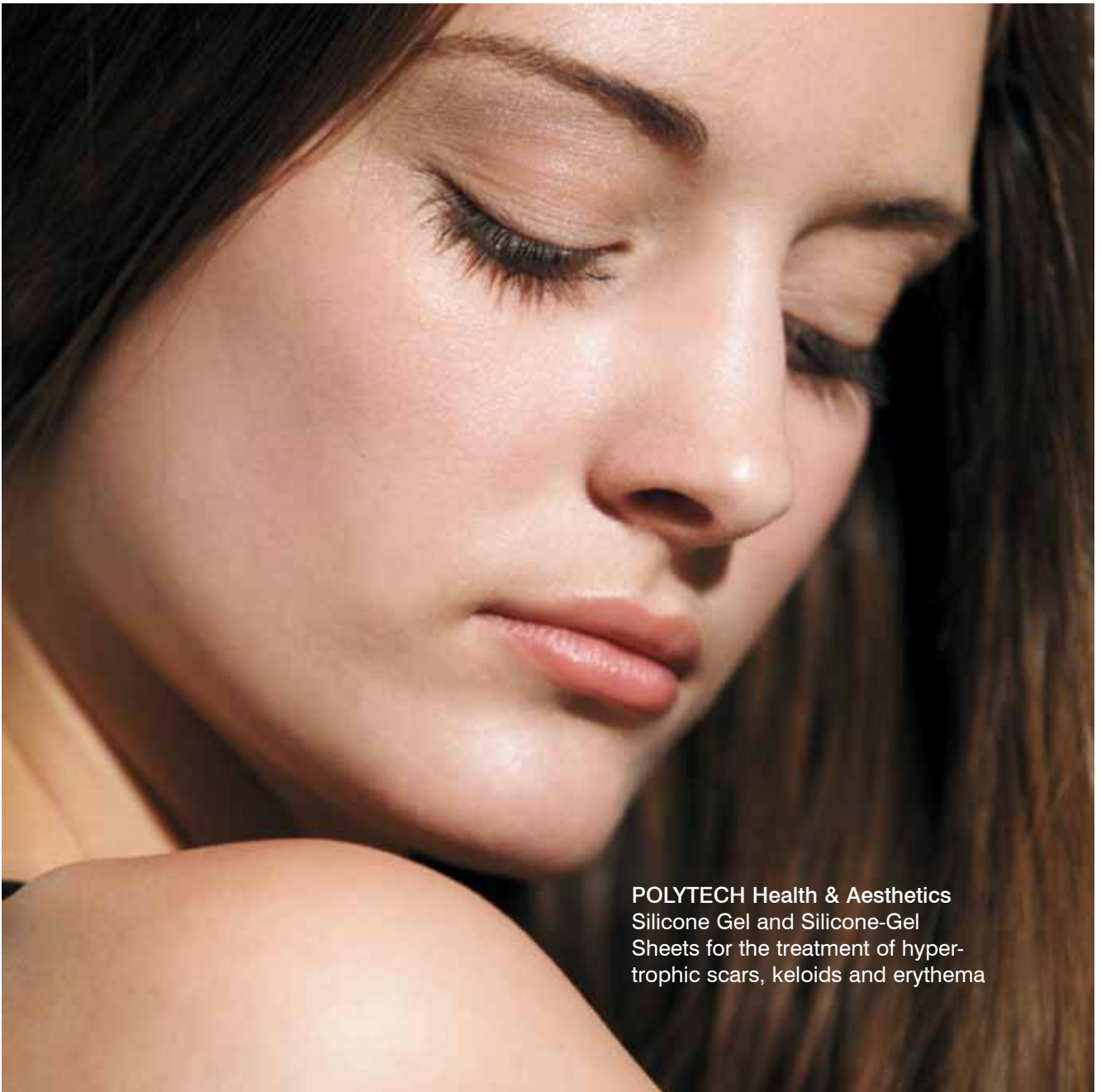
POLYTECH Health & Aesthetics
Silicone Gel and Silicone-Gel Sheets
for scar treatment

NEW!

Silicone Gel: highly efficient
through improved consistency
Silicone-Gel Sheets: discrete
and comfortable to wear

POLYTECH

Health & Aesthetics



POLYTECH Health & Aesthetics
Silicone Gel and Silicone-Gel
Sheets for the treatment of hyper-
trophic scars, keloids and erythema

POLYTECH Health & Aesthetics Silicone Gel and Silicone-Gel Sheets, CE



Product Description

POLYTECH Health & Aesthetics Silicone Gel and Silicone-Gel Sheets are used for the prevention and treatment of hypertrophic scars, keloids and erythema occurring as aftereffects of burns, operations, accidents, dermabrasion, chemical or laser peeling.

POLYTECH Health & Aesthetics Silicone Gel and Silicone-Gel Sheets consist of polysiloxanes and oligomeric siloxanes. The silicone used is medically and biologically safe and consists of the same materials as, for example, used in the coating of tablets.

Production of POLYTECH Health & Aesthetics Silicone Gel and Silicone-Gel Sheets is based on a quality management according to ISO 9001 and ISO 13485. All materials used are of medical-grade quality.

Instructions for Use

POLYTECH Health & Aesthetics Silicone Gel is delivered in a 15g tube and the Silicone-Gel Sheets are available in various forms and dimensions.

The silicone gel sheets are recommended for the treatment of deeper, more persistent scars. They are water-repellent, gas-permeable and self-adherent on one side. Depending on the position of the affected area, an additional fixation of the sheet with a dressing can be necessary. The sheets can be cleaned and therefore be re-used several times. The sheets should be applied for at least 12 hours per day. Due to their transparency the silicone-gel sheets are inconspicuous and comfortable to wear. Their gel-coating ensures the sheets adhere perfectly to the scar.

The silicone gel is mainly used when the application of a gel sheet is difficult or not tolerated by the patient, e.g. over joints and on the face. When exposed to oxygen, the gel forms a durable elastic film. On top of the dried, transparent film, make-up can be applied. This makes the gel an ideal product for facial use. The gel should be applied twice a day in a thin layer. With its improved consistency, the silicone gel can be used extremely sparingly and is therefore even more efficient.

For a successful therapy it is crucial to motivate patients to regularly use POLYTECH Health & Aesthetics Silicone Gel and Silicone-Gel Sheets over a period of several weeks or even months.

Indications

- Treatment of hypertrophic scars, keloids and erythema
- Prevention of hypertrophic scars, keloids and erythema

Results

- Diminishes the height of scars
- Improves scar elasticity
- Reduces contractures
- Lightens the colour of erythema

Advantages

- Easy to apply
- Pain- and risk-free therapy
- Effective also on persistent scars
- Can be used under make-up (gel)

Order n°	Description	Thickness (cm)	Length x Width (cm)
POLYTECH Health & Aesthetics Silicone Gel			
13600-015	Tube, 15g		
POLYTECH Health & Aesthetics Silicone-Gel Sheets			
1310-010	Square	0.9	100 x 100
1330-002	Rectangle	0.9	300 x 20
1320-005	Rectangle	0.9	200 x 50
1330-025	Rectangle	0.9	300 x 250
1370-070	Disk (areola)	0.9	70 x 70
1395-340	Anchor (reduction)	0.9	95 x 340
1370-071	Keyhole (reduction)	0.9	70x70 + 30x70

approximate measurements

Important Information

Do not use POLYTECH Health & Aesthetics Silicone Gel and Silicone-Gel Sheets on open wounds; also do not use them on fresh wounds before re-epithelization is completed. Do not use them on wounds with healing disorders, on infected areas, in combination with skin ointments, or near the eyes and mucous membranes.

Attention: Please note the detailed instructions for use included with each product.



POLYTECH Health & Aesthetics GmbH
 Altheimer Str. 32 • 64807 Dieburg • Germany
 ☎ +49 (0) 60 71 98 63 0 • 📠 +49 (0) 60 71 98 63 30
 ✉ info@polytechhealth.com
 www.polytech-health-aesthetics.com